

THE FUTURE OF FIREFIGHTING

DUNK TRUCK

An evolution in performance and safety. The new firetruck has arrived.

DISPATCH

DEPLOY

DUNK



KENWORTH C-500 CHASSIS

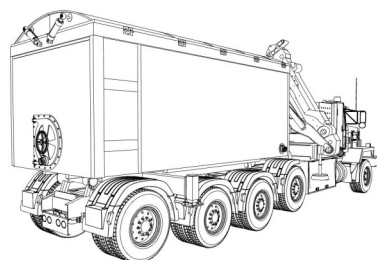
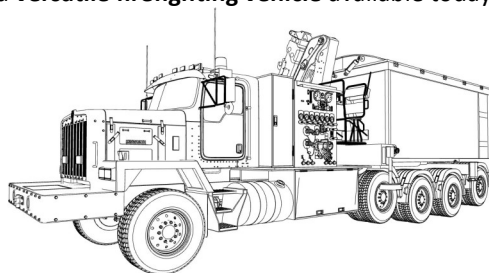
2,050 lbs. torque | 600 HP | 500,000 lbs. capacity

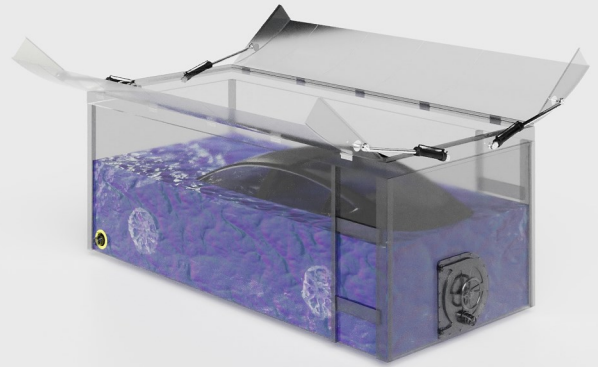


35,000 LITRE TANK

Vehicle Submersion | Super Tanker | Detachable Reservoir

By combining the best features of a **water tanker**, a **high-capacity pump**, and a **thermal crane**, the **Dunk Truck™** is a multipurpose vehicle that every fire department should have in its arsenal. Whether it's **submerging a blazing EV**, hauling water to a rural wildfire, or delivering an emergency water reservoir during a crisis, the Dunk Truck is the most powerful and **versatile firefighting vehicle** available today.





DUNK TANK

At the heart of the Dunk Truck is its **Dunk Tank**—the largest containerized emergency water reservoir available on the market today. With a total capacity of **35,000 liters**, this tank is large enough to fully submerge almost any Class 1 passenger vehicle, providing an immediate and total solution to vehicle fires. The tank itself is built with **reinforced plate steel**, ensuring that it can survive the rigors of even the most dangerous emergencies. It's designed to hold not only water but any hazardous runoff that may result from the fire, preventing contamination of nearby water sources.

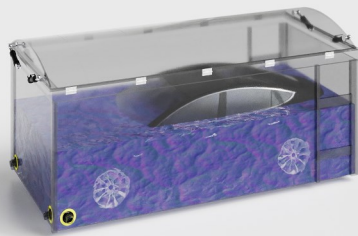
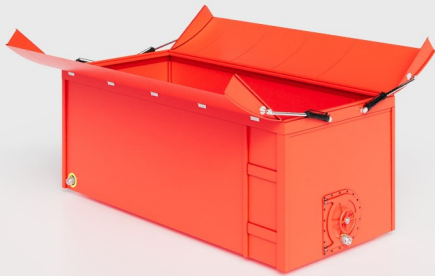
The top facing doors are hydraulically controlled from the remote control system and inside the cab in addition to the maintenance hatch located at the rear of the tank. The DUNK TANK is mounted on a multi-lift for quick on and offloading without the operating needing to leave the cab.

- **Vehicle Submersion** | The ultimate solution for vehicle fires. The DUNK TANK will fit almost all Class 1 passenger vehicles.
- **Water Pumping System** | High volume emergency water pump for emergency response and DUNK TANK reservoir access.
- **Water Haulage**

With its large capacity and onboard pump system, the Dunk Truck can act as Pump and Tanker, bringing **35,000 liters** of water to rural or remote fire locations where access to water is limited.

- **Deployable Water Reservoir:**

The Dunk Tank is more than just a firefighting tool—it's a highly durable and transportable water reservoir. In the case limited water access, larger-scale fires or natural disasters, it can be used to provide emergency water supply, outlasting traditional fabric reservoirs that are prone to damage and leaks. The 35,000 litre capacity DUNK TANK can be on and offloaded by our onboard handling system, allowing one DUNK TRUCK to dispatch multiple DUNK TANKS as quick as they can be delivered. This modular ability makes the DUNK TRUCK the most diverse fire emergency response vehicle on the planet.



UNMATCHED VERSATILITY AND RESPONSE CAPABILITIES

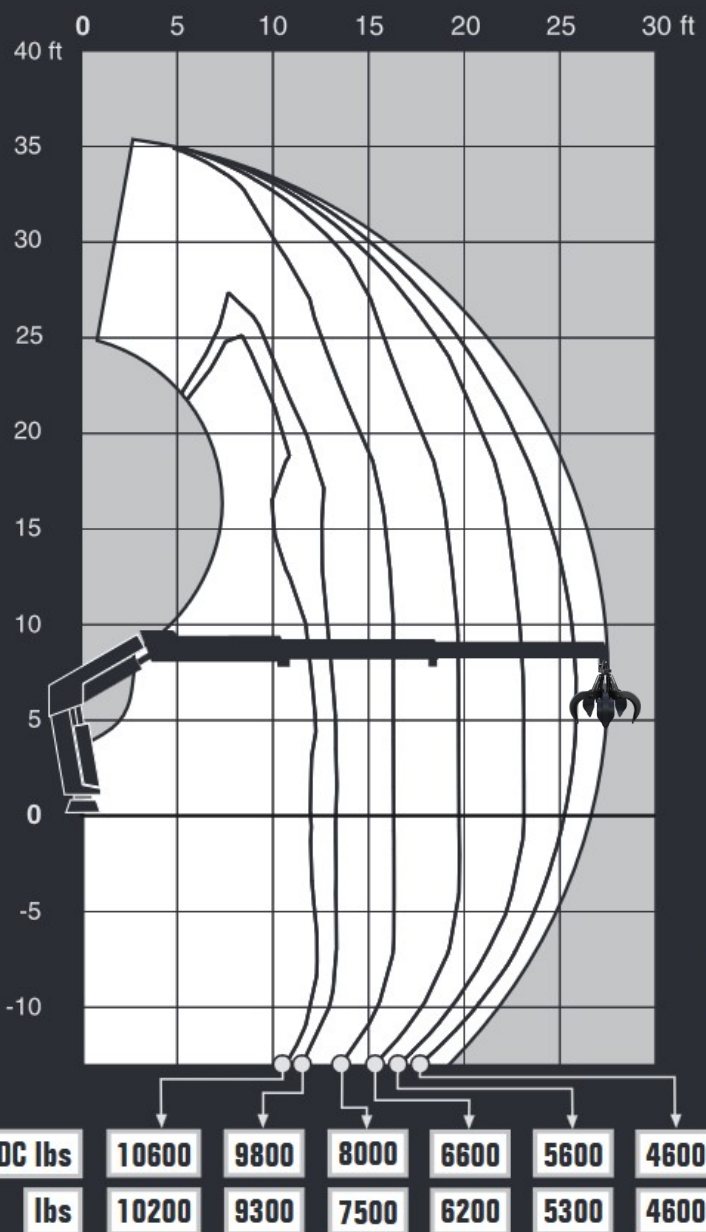
Thermal Crane

Every situation is different, we give you the tools to get creative. We've taken the biggest, most powerful Z folding knuckle boom crane we could find and insulated it with components from the smelting and race car industry. We put the power in your hand, equipping you with just under 30 feet of reach and an orange peel grapple. This combination gives you the most versatile combination available today for fire fighting. Grab, dunk, tear through or knock it down, it's time to super-charge your firefighting force with the most versatile firetruck ever designed.



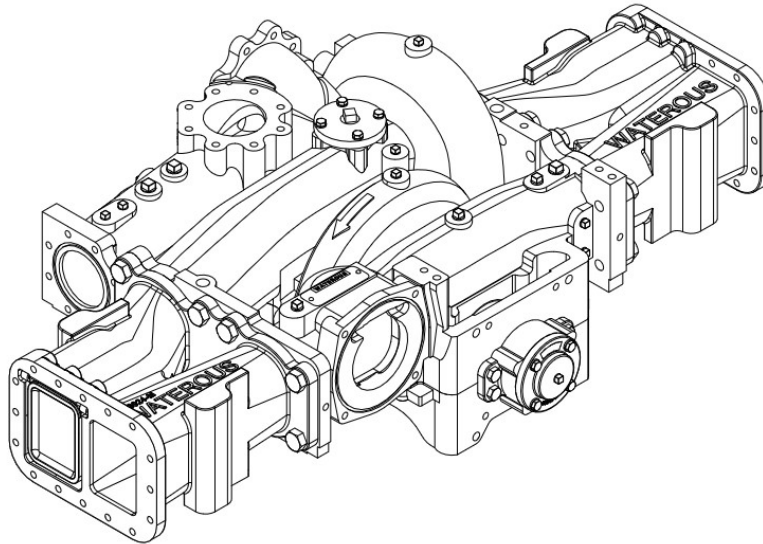
DUNK TRUCK™

Thermal Crane Range & Rated Weights



WATEROUS

WATER PUMP



Dive into the world of high-performance firefighting with the WATEROUS CS Series pumps, engineered for those who demand excellence in emergency situations. The CS Series features midship-mounted centrifugal pumps with a single impeller, designed to deliver unmatched efficiency and reliability.

- Performance Specifications:

- Flow Capacity: Models range from 750 to 2,250 GPM (2,850 to 8,550 LPM), adapting to various operational demands.

Drive Options: Available in both direct drive for immediate action and C22 transmission for enhanced control. The CS Series pumps are the heart of the Dunk Truck, transforming it into a dynamic firefighting powerhouse:

- Dual Water Sourcing:

- Traditional Sources: Easily draw water from lakes, rivers, or hydrants.
- Onboard Reservoir: Equipped with a massive 35,000-liter tank for self-sufficiency in remote or water-scarce environments.
- Multi-Functional Design: The integration of:
 - Tanker Capabilities: For rapid water transport to the scene.
 - Pumper Functions: With the CS Series, the Dunk Truck can actively combat fires with precision and power.

Thermal Crane: Adds an extra layer of utility for rescues, debris removal, or strategic positioning.

Unrivalled in Versatility, Safety, and Efficiency

- Versatility: Adapt to any emergency scenario with a vehicle that does the job of three.
- Safety: Engineered with state-of-the-art safety features to protect operators and bystanders.

Effectiveness: With robust performance metrics, respond to emergencies with confidence and speed.

With the CS Series pumps, elevate your firefighting capabilities. Whether you're dealing with urban fires or battling blazes in the wilderness, the Dunk Truck, powered by our cutting-edge pump technology, ensures you're always one step ahead. Embrace the future of firefighting – **Dunk Truck: where technology meets tenacity. Please contact us directly for more information.**

www.dunktruck.ca